



324rd STATED MEETING OF ALBANY PRESBYTERY

PRE-MEETING PACKET
Saturday, September 28, 2019

Open Space Presentations 9:00 AM
Registration will begin at 9:00 AM
Call to Order and Business Meeting begin at 10:00 AM

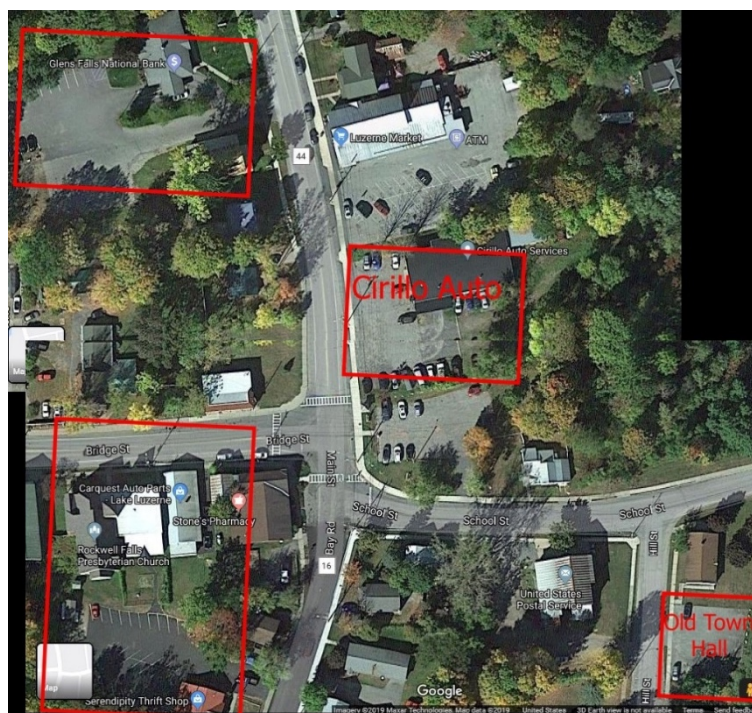
Hosted by the Rockwell Falls Presbyterian Church
7 Bridge Street, Lake Luzerne NY 12846
Tel: (518) 696-3537
Web: rockwellfalls.org

There will be a limited number of packets at the registration table
Please print out your own copies or download them to your mobile device!

Coffee, tea and other light breakfast fare will be available near the registration table. The lunch menu will feature pork loin roast, boiled potatoes, veggies, applesauce and dessert for those inclined; a vegetarian lasagna for vegetarians (or others who just want a great tasting lasagna); and gluten free/vegan Russian vegetable pies for those wishing for them. Meal tickets can be purchased at the registration desk for \$12.

Childcare will be provided without cost to you. Please call 518-696-3537 no later than Wednesday September 25 to make a reservation for your child or children, noting their ages and any special needs. Please do not bring a child if he or she is showing signs of illness.

The Rockwell Falls Church parking lot will not accommodate all commissioners for a Presbytery meeting. Below you'll find a map of the immediate area around the church building. Circled are three other parking areas in addition to the church's lot; none of these lots are more than 150 yards from the church. You are encouraged to use the off-site parking if you can easily walk that distance so the nearby parking at the church is available for those less mobile. There are entrance ramps at both the front and rear entrances to the church building.



Directions to the Rockwell Falls Presbyterian Church, 7 Bridge Street, Lake Luzerne, NY.

From Saratoga Springs and I-87 N

Travel North on Route 9N until you come to the stop light in Corinth (Stewart's Shop on left). Turn left at this light and continue north on Route 9N. You will go about five miles until you reach the traffic light in Lake Luzerne.

Alternatively go past Saratoga Springs to Exit 16 on I-87 N. Turn left and go over Wilton Mountain on Wilton Road (Route 24) into Corinth. Wilton Road becomes Palmer Avenue. Turn right onto Main Street (look for Stewart's Shop on right) go straight for approximately five miles to Lake Luzerne and then continue with the directions below.

Take a left at the light onto Bay Road (a Stewart's Shop is on the right, diagonal, corner). Follow the road and shortly after it bears to the right and goes up a slope, you will find the entrance to the church parking lot on your left. The Serendipity Thrift Shop (on your left) with its orange-red metal roof shares the same entrance.

From Route I-87 S - Exit 21 (Lake George Village)

Turn right onto Route 9N and travel about 10 miles to Lake Luzerne. You'll pass the Hadley-Luzerne High School on your right and Lake Luzerne on your left. Continue past Mill Pond Road and Church Street to School Street. Turn right on School Street and then left at the stop sign. You will see the church steeple in front of you (behind the Stone's Pharmacy building on the corner of School and Main). After turning left at the stop sign go about 100 feet to the first turn (into the church parking lot) on your right. The Serendipity Thrift Shop with its orange-red metal roof shares the same entrance.